

LIGHTWEIGHT

and small mast range

ENG

ENTRY - SUPER ENTRY - STAR - PRIMO - SUPER PRIMO - MAXI PRIMO - ZERO - ULTRALIGHT



TOPICS

- FOR SMALL VEHICLES
- ECONOMIC RANGE WITH HIGH QUALITY
- DIFFERENT MOUNTING POSSIBILITIES:
ON TRIPOD OR ON VEHICLE
- FOR SMALL LAMP UNITS

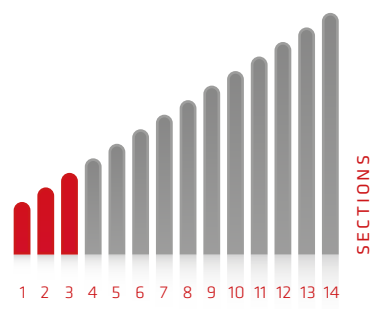
APPLICATIONS



The **ENTRY** mast is the first of the lightweight mast range with the internal electrical cable. It is a light and economic telescopic mast, it has a diameter of 66mm. The extended height goes from 2m up to 4m and the mast can be equipped with a hand pump. On each section there is a locking device to prevent turning of the sections. The mast head has a Ø24mm PIN connection. An optional electrical socket and plug can be supplied for connecting 230V lamp units.



APPLICATIONS



		Mod. ENTRY Ø 66 mm	2 sections with internal cable		
		CN 52	11	12	13
Code P/H	extended height	mm	2.004	2.494	2.990
	retracted height	mm	1.200	1.450	1.700
internal spiralled cable		Standard 4x1,5 mm ² Cod. B optional Cod. H			
	max. top load	kg	23	23	23
	weight	kg	4,5	5	5,5
	max. allowed wind speed	km / h with max. surface: 0,24 m ²	180	165	150

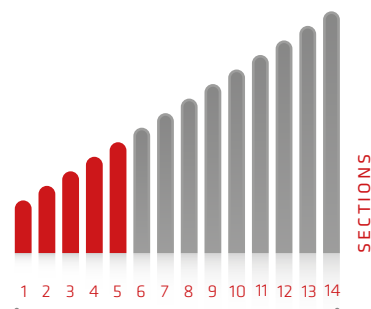
		Mod. ENTRY Ø 66 mm	3 sections with internal cable			
		CN 53	01	02	03	04
Code P/H	extended height	mm	2.498	3.003	3.443	3.963
	retracted height	mm	1.135	1.300	1.470	1.640
internal spiralled cable		Standard 4x1,5 mm ² Cod. B optional Cod. H				
	max. top load	kg	20	20	19	18
	weight	kg	5,5	6	6,5	7
	max. allowed wind speed	km / h with max. surface: 0,2 m ²	150	135	120	110



The **SUPER ENTRY** mast has a diameter of 80mm. The extended height goes from 2m up to 6m and the mast can be equipped with a hand pump. On each section there is a locking device to prevent turning of the sections. The mast head has a Ø24mm PIN connection. An optional electrical socket and plug can be supplied for connecting 230V lamp units.



APPLICATIONS



Mod. SUPER ENTRY Ø 80 mm		2 sections with internal cable		
CO 52		21	22	23
Code P/H	extended height	2.000	2.470	2.960
	retracted height	1.185	1.435	1.685
internal spiralled cable		Standard 4 x 1,5 mm ² Cod. B optional Cod. H		
	max. top load	30	30	30
	weight	6	6,5	7
	max. allowed wind speed	155	140	130

Mod. SUPER ENTRY Ø 80 mm		3 sections with internal cable			
CO 53		11	12	13	14
Code P/H	extended height	2.473	3.004	3.473	3.964
	retracted height	1.120	1.287	1.480	1.647
internal spiralled cable		Standard 4 x 1,5 mm ² Cod. B optional Cod. H			
	max. top load	28	28	28	28
	weight	7	7,5	8	8,5
	max. allowed wind speed	135	120	110	100

Mod. SUPER ENTRY Ø 80 mm		4 sections with internal cable			
CO 54		36	37	38	39
Code P/H	extended height	3.499	3.909	4.499	4.939
	retracted height	1.240	1.380	1.535	1.675
internal spiralled cable		Standard 4 x 1,5 mm ² Code B optional Cod. H			
	max. top load	26	25	24	23
	weight	8,5	9	9,5	10
	max. allowed wind speed	115	105	95	90

Mod. SUPER ENTRY Ø 80 mm		5 sections with internal cable				
CO 55		11	12	13	14	15
Code P/H	extended height	4.000	4.448	5.000	5.500	6.000
	retracted height	1.266	1.374	1.498	1.606	1.714
internal spiralled cable		Standard 4 x 1,5 mm ² Cod. B optional Cod. H				
	max. top load	22	22	21	21	20
	weight	9,5	10	10,5	11	11,5
	max. allowed wind speed	115	105	95	90	85

The **STAR** mast is a light and economic telescopic mast, it has a diameter of 66mm.

The extended height goes from 2m up to 5m and the mast can be equipped with a hand pump.

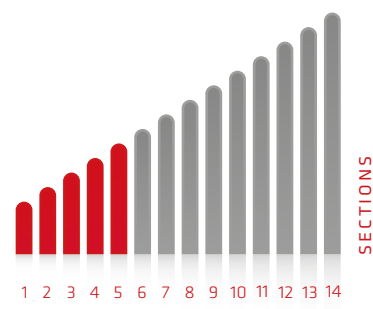
On each section there is a locking device to prevent turning of the sections.

The mast head has a Ø24mm PIN

Connection for mounting different lamp units or very small equipment.



APPLICATIONS



Mod. STAR Ø 66 mm		2 sections without internal cable			
CA 52		21	22	23	
Code P/H	extended height	mm	1.930	2.480	2.980
	retracted height	mm	1.120	1.370	1.620
	max. top load	kg	23	23	23
	weight	kg	4,5	5	5,5
	max. allowed wind speed	km / h with max. surface: 0,2 m ²	180	165	150

Mod. STAR Ø 66 mm		3 sections without internal cable			
CA 53		21	22	23	
Code P/H	extended height	mm	2.739	3.244	3.759
	retracted height	mm	1.120	1.315	1.620
	max. top load	kg	19	19	19
	weight	kg	5,5	6	7
	max. allowed wind speed	km / h with max. surface: 0,2 m ²	135	125	115

Mod. STAR Ø 66 mm		4 sections without internal cable			
CA 54		01	02	03	
Code P/H	extended height	mm	3.483	3.983	4.483
	retracted height	mm	1.200	1.325	1.450
	max. top load	kg	15	15	15
	weight	kg	6,5	7	7,5
	max. allowed wind speed	km / h with max. surface: 0,2 m ²	110	100	90

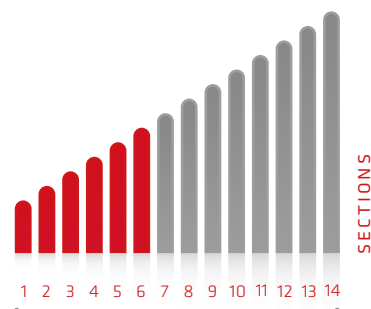
Mod. STAR Ø 66 mm		5 sections without internal cable			
CA 55		01	02	03	
Code P/H	extended height	mm	4.020	4.440	4.940
	retracted height	mm	1.170	1.270	1.370
	max. top load	kg	12	12	12
	weight	kg	7	7,5	8
	max. allowed wind speed	km / h with max. surface: 0,2 m ²	95	90	80



The **PRIMO** mast has a diameter of 66mm. The extended height goes from 3m up to 9m and the mast can be equipped with a hand pump. On each section there is a locking device to prevent turning of the sections. The mast head has a Ø24mm PIN connection for mounting different lamp units or or small equipment.



APPLICATIONS



Mod. PRIMO Ø 66 mm		4 sections without internal cable						
CP 54		11	12	13	14	15	16	
Code P/H	extended height	mm	2.963	3.483	3.963	4.483	5.103	5.923
	retracted height	mm	1.070	1.200	1.320	1.450	1.620	1.810
	max. top load	kg	16	15	15	14	13	12
	weight	kg	6	6,5	7	7,5	8	9
	max. allowed wind speed	km / h with max. surface: 0,2 m ²	120	110	100	90	85	75
	Ø top section		45 mm					

Mod. PRIMO Ø 66 mm		6 sections without internal cable								
CP 56		01	02	03	04	05	06	07	08	
Code P/H	extended height	mm	3.420	3.930	4.490	5.230	5.980	7.016	7.930	9.080
	retracted height	mm	1.000	1.085	1.170	1.335	1.460	1.616	1.835	1.960
	max. top load	kg	9	9	9	8	8	7	7	6
	weight	kg	7,0	7,5	8	8,5	9	10	11	11,5
	max. allowed wind speed	km / h	105	95	85	75	65	110	95	80
	with max. surface		0,2 m ²				0,1 m ²			
	Ø top section		31 mm							

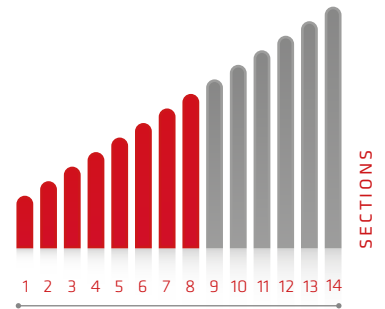
Super Primo

The **SUPER PRIMO** mast has a diameter of 80mm. The extended height goes from 4m up to 16m and the mast can be equipped with a hand pump. On each section there is a locking device to prevent turning of the sections.

The mast head has a $\varnothing 24$ mm PIN connection. This mast can bear bigger head loads in respect to the ones listed before.



APPLICATIONS



		Mod. SUPER PRIMO \varnothing 80 mm	4 sections without internal cable		
		CO 54	26	27	28
Code P/H	extended height	mm	4.983	5.923	6.923
	retracted height	mm	1.650	1.810	2.060
	max. top load	kg	24	23	20
	weight	kg	10,5	11,5	12,5
	max. allowed wind speed	km / h with max. surface: 0,1 m ²	115	100	85
	\varnothing top section		59 mm		

		Mod. SUPER PRIMO \varnothing 80 mm	6 sections without internal cable								
		CO 56	16	17	18	19	20	21	22	23	
Code P/H	extended height	mm	5.010	6.005	6.995	7.930	8.870	10.120	10.970	12.020	
	retracted height	mm	1.290	1.460	1.625	1.835	1.950	2.200	2.550	2.800	
	max. top load	kg	18	16	16	14	13	11	10	10	
	weight	kg	11	12	13	14,5	15	16,5	19	20,5	
	max. allowed wind speed*	km / h	110	90	75	160	150	135	120	105	
	with max. surface 0,1 m ²						guyed				
	\varnothing top section		45 mm							Guy lines to be fitted to the second to top section	

⚠ On this leaflet you will find just a small selection of our mast models, please contact us for further information.

*When erecting masts with guying ropes, take extreme care during the extension phase. Maximum allowed wind speed during extension is 20km/h

LIGHTWEIGHT MASTS WITHOUT INTERNAL CABLE



Mod. SUPER PRIMO Ø 80 mm		7 sections without internal cable							
CO 57		01	02	03	04	05	06		
Code P/H	extended height	mm	5.033	6.013	7.034	8.023	9.003	10.018	
	retracted height	mm	1.220	1.360	1.523	1.690	1.830	1.975	
	max. top load	kg	12	12	11	9	9	8	
	weight	kg	11,5	12,4	13,5	14,8	15,7	16,7	
	max. allowed wind speed*	km / h	105	90	75	155	140	125	
	with max. surface 0,1 m ²							guyed	
	Ø top section		38 mm					Guy lines to be fitted to the second to top section	

Mod. SUPER PRIMO Ø 80 mm		7 sections without internal cable							
CO 57		07	08	09	10	11	12		
Code P/H	extended height	mm	11.013	12.028	13.023	14.003	15.018	16.663	
	retracted height	mm	2.160	2.305	2.490	2.630	2.775	3.070	
	max. top load	kg	8	7	6	5	5	4	
	weight	kg	18,1	19,1	20	20,8	22	24	
	max. allowed wind speed*	km / h	110	95	130	115	100	80	
	with max. surface 0,1 m ²							guyed	
	Ø top section		38 mm					Guy lines to be fitted to the second to top section	
								2 Levels of guying rings	

Mod. SUPER PRIMO Ø 80 mm		8 sections without internal cable							
CO 58		01	02	03	04	05	06		
Code P/H	extended height	mm	5.799	6.999	8.009	9.011	10.529	11.979	
	retracted height	mm	1.200	1.420	1.590	1.715	1.940	2.130	
	max. top load	kg	9	9	7	7	6	6	
	weight	kg	11,6	13,4	14,8	15,7	17,5	18,9	
	max. allowed wind speed*	km / h	90	70	140	125	100	80	
	with max. surface 0,1 m ²							guyed	
	Ø top section		31 mm					Guy lines to be fitted to the second to top section	

⚠ On this leaflet you will find just a small selection of our mast models, please contact us for further information.

*When erecting masts with guying ropes, take extreme care during the extension phase. Maximum allowed wind speed during extension is 20km/h

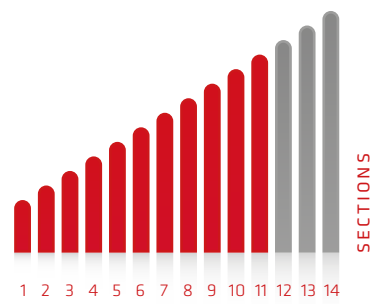
Maxi Primo

The **MAXI PRIMO** mast is the biggest mast of the lightweight range and has a diameter of 101mm. The extended height goes from 7.5m up to 20m and the mast can be equipped with a hand pump. On each section there is a locking device to prevent turning of the sections.

The mast head has a Ø24mm PIN connection for mounting different lamp units or measuring equipment, antennas etc.



APPLICATIONS



Mod. MAXI PRIMO Ø 101 mm		7 sections without internal cable					
CM 57		01	02	03	04	05	
Code P/H	extended height	mm	7.476	9.046	10.496	12.476	15.106
	retracted height	mm	1.575	1.825	2.075	2.375	2.785
	max. top load	kg	22	20	18	12	10
	weight	kg	19,6	22,1	24,6	27,5	30,6
	max. allowed wind speed*	km / h	85	70	60	120	120
	with max. surface 0,1 m ²		guyed				
	Ø top section		59 mm				
		Guy lines to be fitted to the second to top section			2 Levels of guying rings		

Mod. MAXI PRIMO Ø 101 mm		8 sections without internal cable						
CM 58		07	08	09	10	11	12	
Code P/H	extended height	mm	9.030	10.550	12.000	13.520	14.960	17.010
	retracted height	mm	1.715	1.940	2.130	2.320	2.500	2.800
	max. top load	kg	14	12	11	10	9	8
	weight	kg	22,3	24,7	26,7	28,6	30,5	32,8
	max. allowed wind speed*	km / h	70	55	115	100	120	110
	with max. surface 0,1 m ²		guyed					
	Ø top section		52 mm					
		1 Level of guying rings			2 Levels of guying rings			
		Guy lines to be fitted to the second to top section						

⚠ On this leaflet you will find just a small selection of our mast models, please contact us for further information.

*When erecting masts with guying ropes, take extreme care during the extension phase. Maximum allowed wind speed during extension is 20km/h

LIGHTWEIGHT MASTS WITHOUT INTERNAL CABLE



Mod. MAXI PRIMO Ø 101 mm		9 sections without internal cable								
CM 59		01	02	03	04	05	06	07	08	
Code P/H	extended height	mm	7.512	9.052	10.502	12.032	13.492	15.022	16.860	19.832
	retracted height	mm	1.500	1.680	1.850	2.020	2.200	2.370	2.592	3.100
	max. top load	kg	14	13	12	10	9	8	7	5
	weight	kg	21,2	23,2	25,1	27	29	30,8	32,5	38,2
	max. allowed wind speed*	km / h	80	65	55	100	90	120	110	120
	with max. surface 0,1 m ²		guyed							
	Ø top section		45 mm							
			1 Level of guying rings			2 Levels of guying rings		3 Levels of guying rings		
			Guy lines to be fitted to the second to top section							

Mod. MAXI PRIMO Ø 101 mm		10 sections without internal cable							
CM 50		07	08	09	10	11	12	13	
Code P/H	extended height	mm	6.047	7.547	8.867	10.457	11.957	13.457	14.597
	retracted height	mm	1.250	1.400	1.550	1.700	1.850	2.000	2.150
	max. top load	kg	13	13	11	9	8	7	5
	weight	kg	18,6	20,4	22,2	23,9	25,6	27,3	29,2
	max. allowed wind speed*	km / h	100	80	130	110	90	130	120
	with max. surface 0,1 m ²		guyed						
	Ø top section		38 mm						
			1 Level of guying rings				2 Levels of guying rings		
			Guy lines to be fitted to the second to top section						

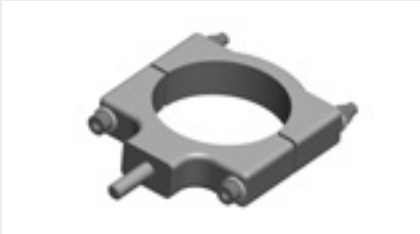
Mod. MAXI PRIMO Ø 101 mm		11 sections without internal cable						
CM 51		01	02	03	04	05	06	
Code P/H	extended height	mm	4.958	6.495	8.035	9.475	10.995	12.455
	retracted height	mm	983	1.250	1.390	1.530	1.650	1.810
	max. top load	kg	9	8	8	7	6	6
	weight	kg	14,9	18,8	20,4	22,2	22,9	25,6
	max. allowed wind speed*	km / h	130	95	75	110	95	80
	with max. surface 0,1 m ²		guyed					
	Ø top section		31 mm					
			1 Level of guying rings					
			Guy lines to be fitted to the second to top section					

⚠ On this leaflet you will find just a small selection of our mast models, please contact us for further information.

*When erecting masts with guying ropes, take extreme care during the extension phase. Maximum allowed wind speed during extension is 20km/h



ACCESSORIES



UPPER FIXING BRACKET



ROUND ROOF BRACKET



BASE WITH JOINT



MAST CARRYING BAG



PICKET FOR ROPES

AVAILABLE FLOODLIGHTS TYPES:

230V - IP65

- 400W Halogen
- 1000W Halogen
- 1500W Halogen
- 250W MH/HPS
- 400W MH/HPS
- 100W Firecoled
- 162,5W XLED
- 185W XLED

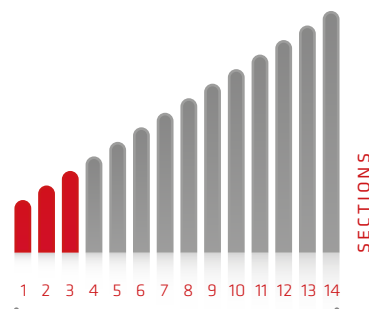
12V and 24V

- 42W Xenon
- 100W/150W Xenophot
- 70W MH/HPS
- 250W MH/HPS
- 40W / 50W / 90W LED
- 100W Firecoled
- 162,5W XLED
- 185W XLED

The telescopic mast **ZERO** is the smallest mast of the Partner family and has a diameter of 64mm. The extended heights go from 1.855m up to 5.651m. This mast model can be used for light top loads, like small lamp units, cameras, sensors etc.



APPLICATIONS



Code N	Mod. ZERO Ø 64 mm		3 sections with internal cable								
	CZ 33		01	02	03	04	05	06	07	08	09
	extended height	mm	1.855	2.251	2.740	3.151	3.651	4.125	4.635	5.145	5.651
	retracted height	mm	939	1.069	1.234	1.369	1.539	1.709	1.879	2.049	2.219
	weight	kg	6,4	7	7,6	8,2	8,9	9,5	10,2	11	11,7
	internal spiralled cable		Standard 4x1,5 mm ² Cod. B								
	max. top load	kg	20	20	20	20	20	15	15	15	15
	max. allowed wind speed	km / h	160	150	140	150	140	130	145	135	125
	with max. surface		0,3 m ²			0,2 m ²			0,1 m ²		
	max. air pressure		2,5 kg / cm ² (bar)								
	Ø top section		38 mm								

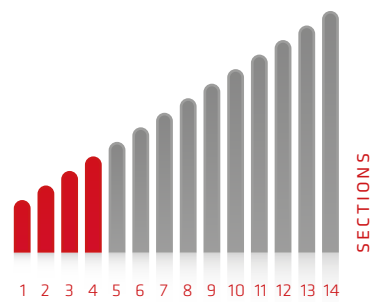


The telescopic mast **ULTRALIGHT** mast has a diameter of 77mm, the extended heights go from 2.253m up to 6.962m. This mast is more versatile than the Zero, thanks also to the larger ratio between extended and retracted height. It is also available with 4 sections.

The Ultralight can carry greater top loads than the Zero mast and can also be equipped with a tilt and turn unit.



APPLICATIONS



Mod. ULTRALIGHT Ø 77 mm		3 sections with internal cable									
CU 33		16	17	18	19	20	21	22	23	24	
Code N	extended height	mm	2.253	2.700	3.126	3.617	4.117	4.595	5.117	5.599	6.067
	retracted height	mm	1.070	1.235	1.369	1.540	1.710	1.880	2.050	2.220	2.390
	weight	kg	8,7	9,6	10,3	11,2	12,1	13	13,9	14,7	15,6
internal spiralled cable		Standard 4x1,5 mm ² Cod. B									
	max. top load	kg	25	25	25	25	25	22	20	20	18
	max. allowed wind speed	km / h	150	140	130	145	135	125	160	150	140
	with max. surface		0,5 m ²			0,3 m ²			0,1 m ²		
	max. air pressure		2,5 kg / cm ² (bar)								
	Ø top section		51 mm								

Mod. ULTRALIGHT Ø 77 mm		4 sections with internal cable									
CU 34		01	02	03	04	05	06	07	08	09	
Code N	extended height	mm	2.441	2.944	3.424	3.932	4.597	5.274	5.873	6.422	6.962
	retracted height	mm	1.001	1.149	1.269	1.399	1.569	1.739	1.909	2.099	2.269
	weight	kg	9,4	10,2	11	11,8	12,8	13,9	14,9	16	16,9
internal spiralled cable		Standard 4x1,5 mm ² Cod. B									
	max. top load	kg	20	20	20	20	16	16	13	13	12
	max. allowed wind speed	km / h	160	150	140	150	135	120	130	115	105
	with max. surface		0,3 m ²			0,2 m ²			0,1 m ²		
	max. air pressure		2,5 kg / cm ² (bar)								
	Ø top section		38 mm								

On the Ultralight mast 3 sections you can also mount a small Tilt Unit or a Tilt & turn unit NOVA.

Lights electrical movements

COMPACT TILT UNIT



The dimensions are compact **172 w. x 159 l. x 170mm h.**, the weight is of only **4 kg.**

Tilting angle of 310°, it can mount small lamp units like 4x500W Ha, 4x50W LED, 4xHella with compact mounting brackets (max. top load of 10kg - max. q.ty of floodlights 4).

It can be equipped with a simple remote control for tilting or with the complete multifunctional remote control (the electronic board will be mounted on the mast base).

TILT & TURN UNIT NOVA 2 MOTORS



TT.36151 = 12V

TT.36152 = 24V

Compact and easy to use, the maximum top load is 40kg.

Available 12V and 24V, suitable for the most common applications. It will be supplied with a set of quick connectors for each floodlight (to be ordered separately).

TILT AND TURN UNIT NOVA WITH INDEPENDENT TILTING OF THE ARMS (3 MOTORS)



TT.36161 = 12V

TT.36162 = 24V

The arms can be tilted independently for a wider illumination capacity. The maximum top load is 50kg.

Available 12V and 24V. It will be supplied with a set of quick connectors for each floodlight (to be ordered separately).

Multifunctional remote controls with electronic board



The FIRECO multifunctional remote control permits you to control ALL the functions of the mast with just one remote control.

The remote control is easy and safe to use, thanks to the automatic block of the keypad and easy to understand functions.

The mast with the multifunctional remote control is supplied with an electronic board and an electrovalves group.

MAST WITH TILT AND TURN UNIT



- RC.31746

Multifunctional remote control for mast extension/retraction, tilt & turn of the floodlights, on/off switching of floodlights, automatic restore – ergonomic, with protection cover and 4mt spiralled cable

Available also radio = [RC.31747](#)

Available also TOUCH SCREEN

Available also for Tilt & turn unit 3 motors = [RC.31748](#)

MAST WITHOUT TILT AND TURN UNIT



- RC.31742

Multifunctional remote control for mast extension/retraction, single on/off switching of 4 floodlights, automatic restore – ergonomic, with protection cover and 4mt spiralled cable

Available also radio = [RC.31745](#)

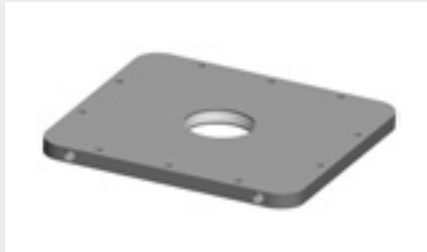
Accessories

MOUNTING BRACKETS



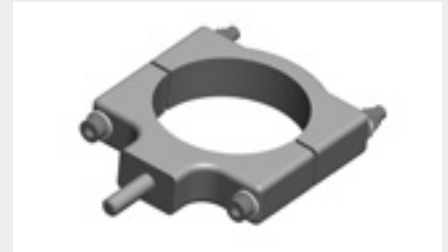
ROUND ROOF BRACKET

BK.30002 = for mast $\varnothing 66$ mm
BK.30005 = for mast $\varnothing 80$ mm
BK.30009 = for mast $\varnothing 101$ mm
BK.30001 = for mast $\varnothing 64$ mm
BK.30003 = for mast $\varnothing 77$ mm



SQUARE ROOF BRACKET

BK.30052 = for mast $\varnothing 66$ mm
BK.30051 = for mast $\varnothing 80$ mm
BK.30059 = for mast $\varnothing 101$ mm
BK.30053 = for mast $\varnothing 64$ mm
BK.30054 = for mast $\varnothing 77$ mm



UPPER FIXING BRACKET

BK.30201 = for mast $\varnothing 66$ mm
BK.30205 = for mast $\varnothing 80$ mm
BK.30209 = for mast $\varnothing 101$ mm

ONLY FOR LIGHTWEIGHT MAST



LOWER FIXING BRACKET

BK.30101 = for mast $\varnothing 66$ mm
BK.30105 = for mast $\varnothing 80$ mm
BK.30109 = for mast $\varnothing 101$ mm

ONLY FOR LIGHTWEIGHT MAST



UPPER FIXING BRACKET

BK.30202 = for mast $\varnothing 64$ mm
BK.30203 = for mast $\varnothing 77$ mm

ONLY FOR ZERO AND ULTRALIGHT



LOWER FIXING BRACKET

BK.30102 = for mast $\varnothing 64$ & $\varnothing 77$ mm

ONLY FOR ZERO AND ULTRALIGHT

AIR SUPPLY



HAND PUMP

available also with discharge valve



50LT/1' 12 OR 24V

Can be equipped with a remote control

Pneumatic Control Board



The pneumatic control board is designed for the mast extension and retraction and is required when you use the air from the vehicle's

air system, a compressed air cylinder or a compressor without pressure control.



PC.33213



PC.33211

Pneumatic control block with pressure regulator

PC.33212

Pneumatic control block with pressure regulator and spring

PC.33213

Pneumatic control block with pressure regulator and spring only for extension

PC.33221

Pneumatic control block pressure regulator and dry filter

PC.33222

Pneumatic control block with pressure regulator, dry filter and spring

PC.33223

Pneumatic control block with dry filter and spring for extension only

GALLERY FOR

Lightweight and small mast range



